

Corral Your Site and Building Proposals

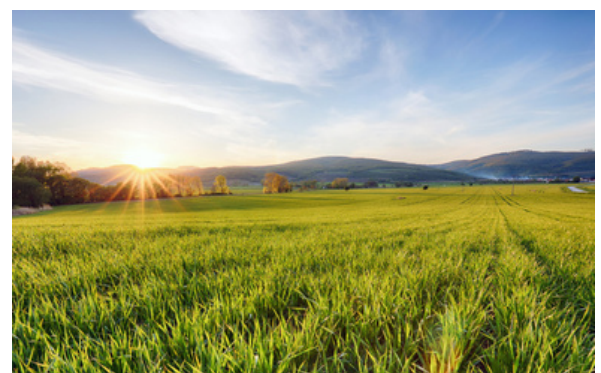
Submitting a site selection request for information (RFI) can be a time consuming task. So we decided to do something about it. Lasso is the first-of-its-kind property data collection software that streamlines the process.

THE PROCESS

- 1 **Project Manager**
Creates and Issues RFI (or RFP)
- 2 **Economic Development Organizations and Community Stakeholders**
Recieve Request, Delegate Questions, and Respond Collaboratively as a Community
- 3 **Lasso**
Corrals the responses into a streamlined Proposal
- 4 **Project Manager**
Reviews and Downloads Data

BY THE NUMBERS

- 65** **SITE SELECTION PROJECTS** requested through Lasso
- 1400** **PROPERTIES SUBMITTED** to corporations + site selectors
- 1975** **ECONOMIC DEVELOPERS** submitted properties





For **Site Selectors**

COLLECT PROPERTY DATA WITH EASE

Using Lasso's master RFI template, curated by GLS consultants, select your project requirements, set a deadline, and send. The responses are standardized, easily viewed on a map, and available for download to one spreadsheet.

GET FASTER, MORE ACCURATE RESPONSES

Lasso offers economic developers a free account, client success guides, and tech support. Economic developers can collaborate as a team to prepare and store RFI responses to recall at a later date. Lasso also offers multi-tiered access so teams can delegate quotes to external partners, such as utility or railroad providers, to respond with accurate information in one place.

For **Economic Developers**

WORK AS A TEAM AND GET YOUR TIME BACK

Lasso offers multi-tiered access for partners to respond with accurate information in one place. With the total recall feature, past data is saved and available for new submissions in the future.

COLLECT PROPERTY DATA WITH EASE

Using Lasso's master RFI template select your project requirements, set a deadline, and send. The responses are standardized, easily viewed on a map, and available for download to one spreadsheet.



TRUSTED BY



www.strataplatforms.com